



JRA NEUTRON OPTICS

New spectrometer designs implementing advanced optical components

JRA presentation
General Assembly
Barcelona
May 2010



PARTICIPANTS

- BNC Budapest Neutron Center
- DTU Danmarks Tekniske Universitet
- EPFL Ecole Polytechnique Fédérale de Lausanne
- HZB Helmholtz Zentrum Berlin
- ILL Institut Laue Langevin
- INFN Istituto Nazionale per la Fisica della Materia
- JCNS Jülich Center for Neutron Scattering
- LLB Laboratoire Léon Brillouin
- NPI Nuclear Physics Institute
- PSI Paul Scherrer Institute
- TUM Technischen Universität München
- UCPH University Copenhagen



nmi3

Hired people

- PSI: J. Stahn
 - **Tobias Panzner**: Monte-Carlo simulations McSTAS
 - New component for elliptical and parabolic guides (tested)
 - Modeling of a modified REFOCUS concept: SELENE

- TUM: P. Böni
 - **Roxana Valicu**
Work on adaptive optics

- HZB: T. Krist
 - **Jennifer Schultz**, PhD student (since January 2010)
Refraction by prisms

- INFN: F. Sacchetti
 - **Lorenzo Sani**
Work on Fresnel Zone plates

- University Copenhagen: K. Lefman
 - **Jonas Okkels Birk**
CAMEA project



nmi3

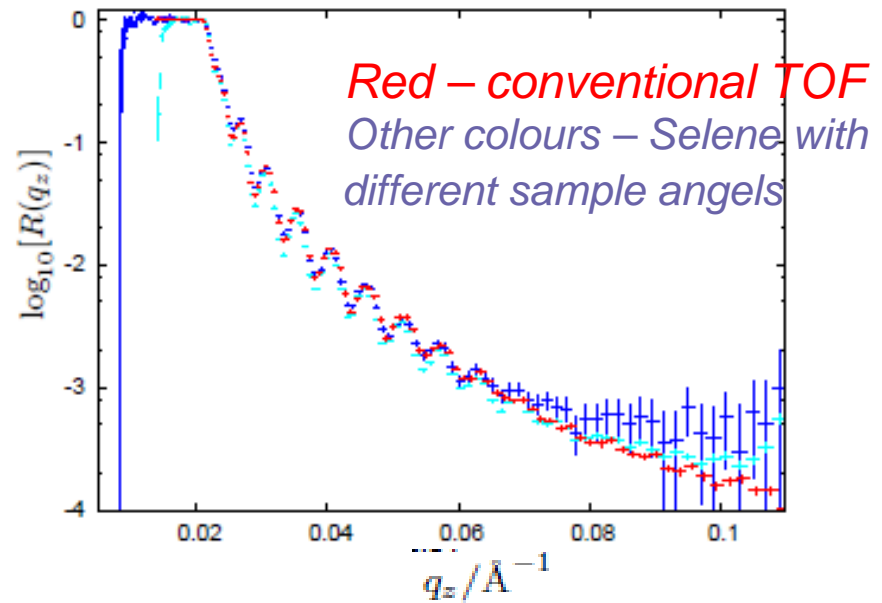
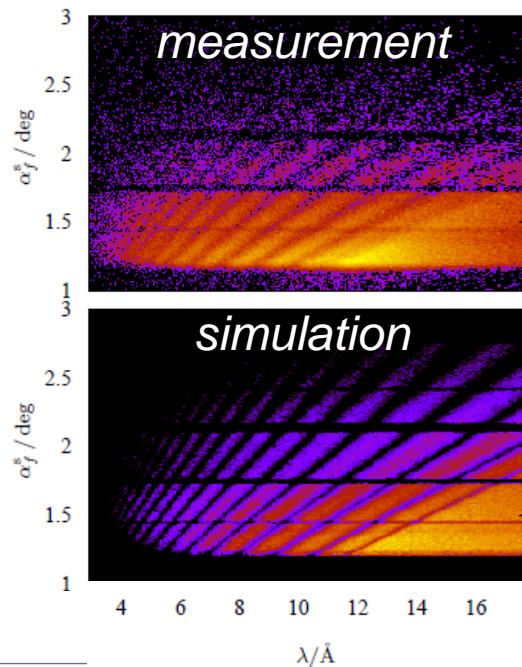
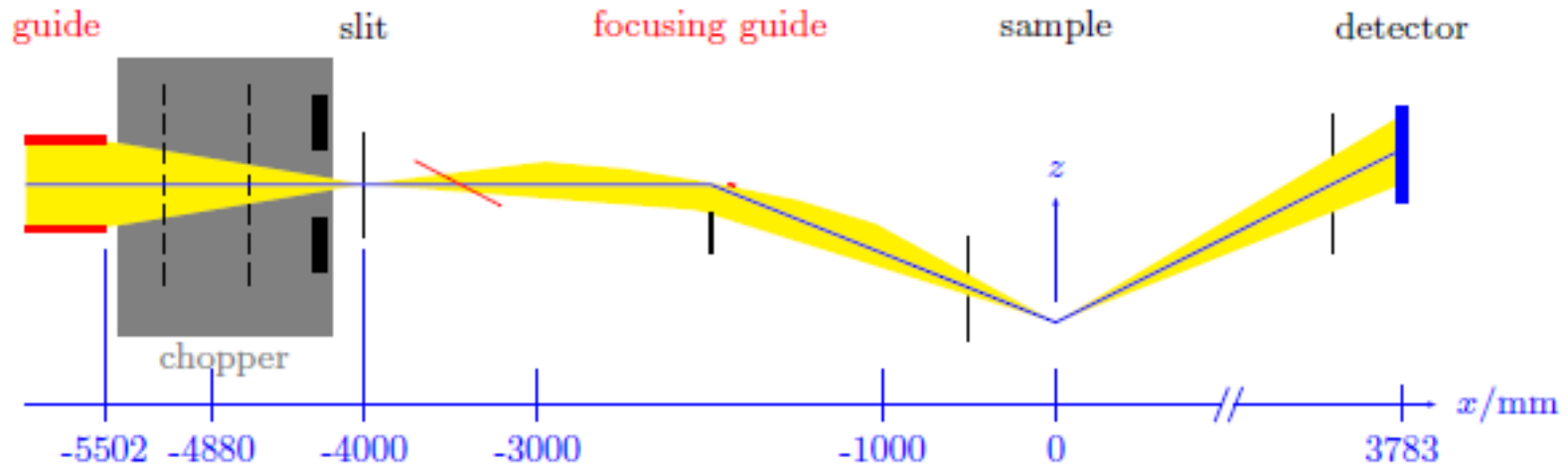
Working plan

- **Task 2: High flux reflectometry and energy analysis**
- **Task 3: Advanced Focusing Techniques**
- **Task 4: Monte-Carlo simulations of complex optics**



Task 2: High flux reflectometry and energy analysis

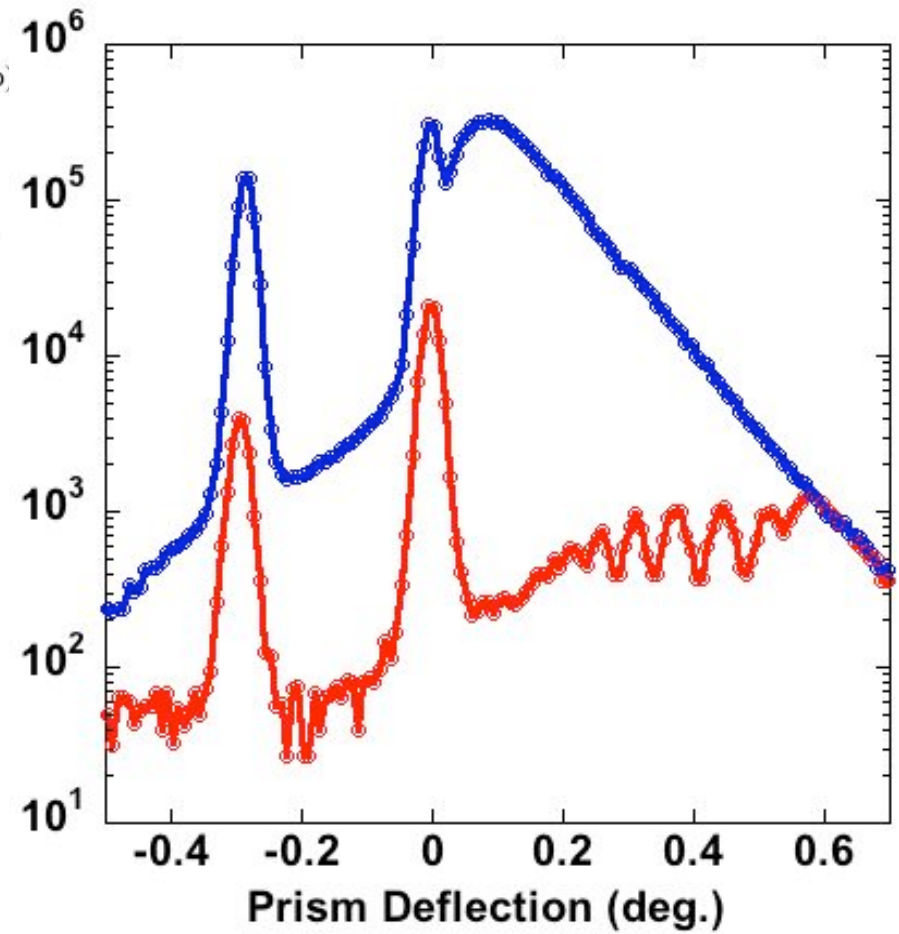
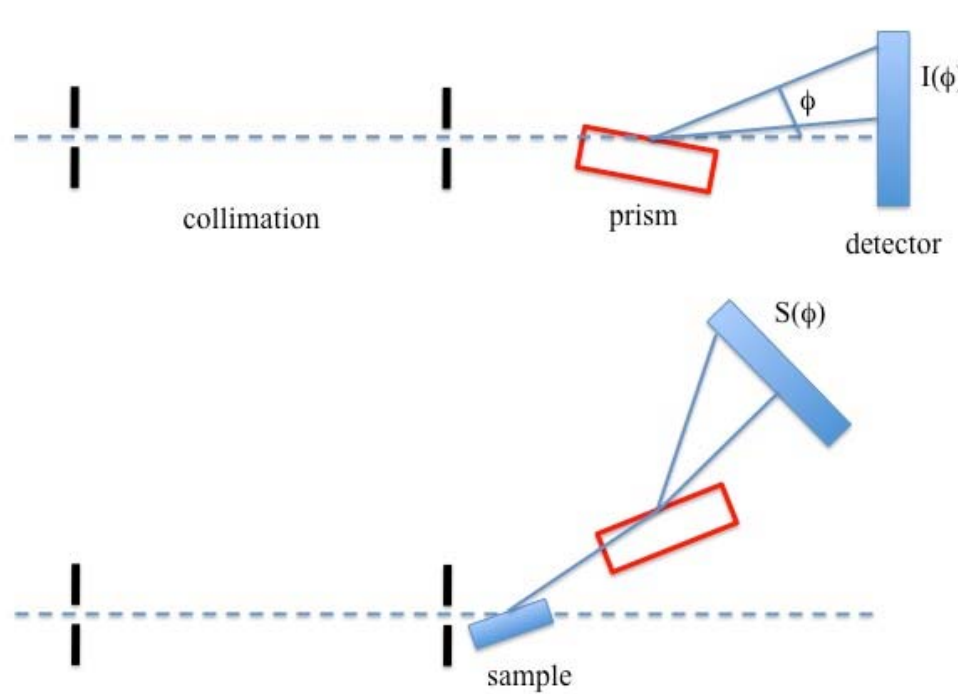




detailed results can be found on <http://arxiv.org/abs/1102.2747v1> Seite 6



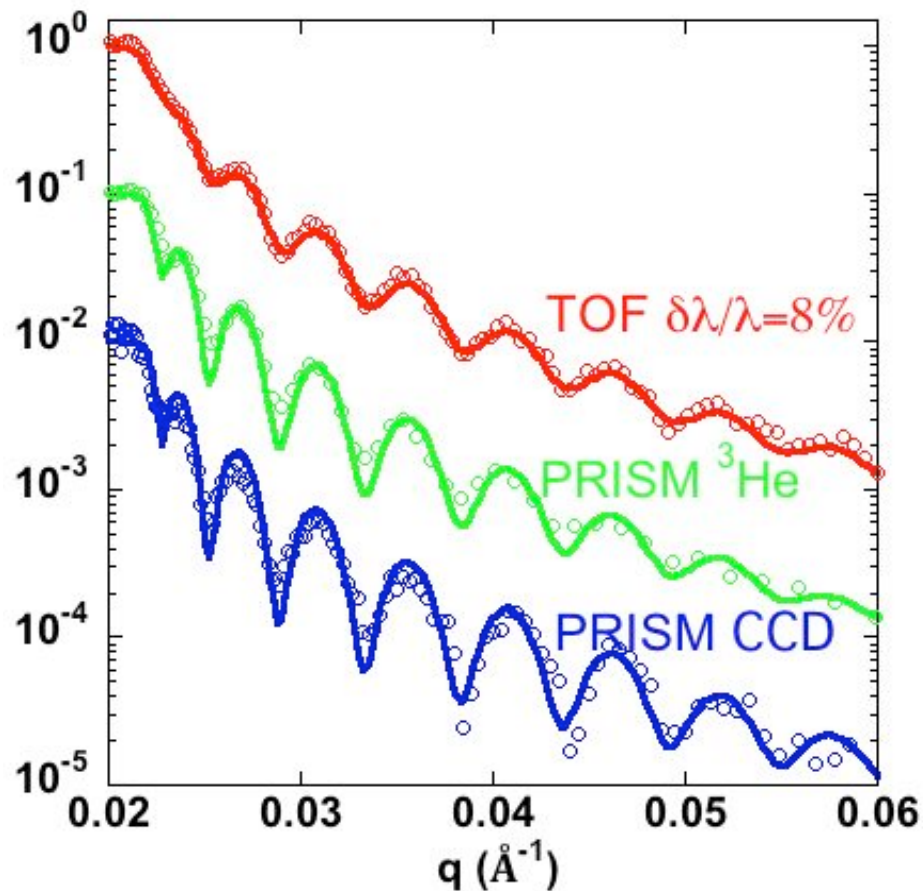
SYSTEM USING A SINGLE PRISM (R. Cubitt, ILL)



Collimations 0.5mm / 1.6m apart
 PRISM set 0.742m after the sample
³He detector (6m from the sample) / resolution 2.4mm FWHM
 CCD camera / 5.1m from sample / resolution 0.2 mm / efficiency 10%
 Sample Ni/glass (50 x 140mm²)

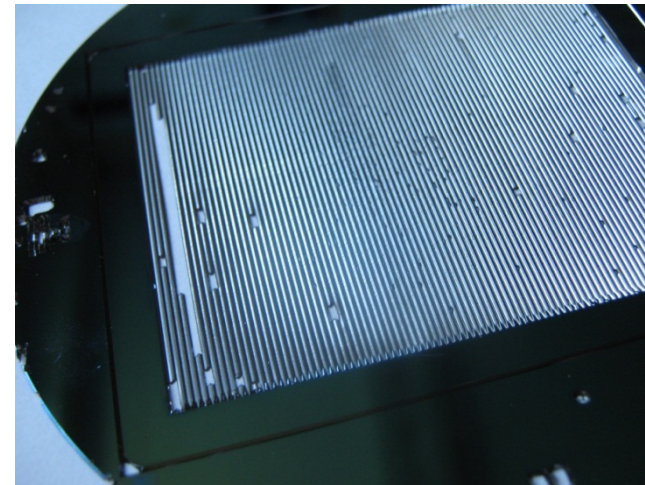
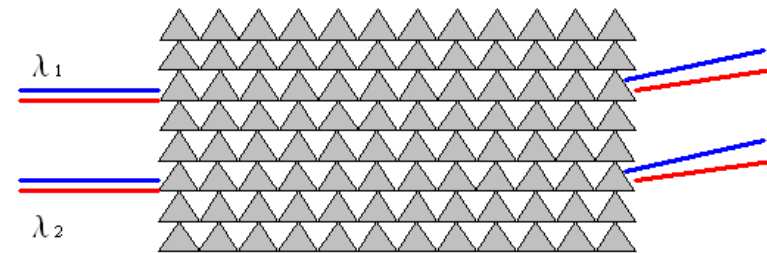
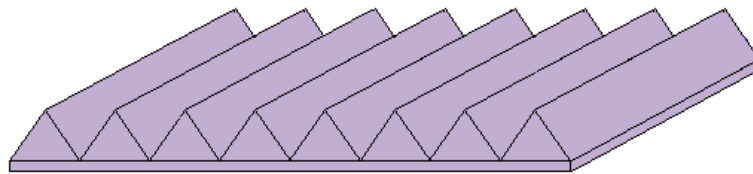


Measurement on a thick Ni layer



- *Very efficient for high resolution experiments (gains x30 – x90)*
 - *Kinetic measurements*
 - *Small samples*
- *Limitation: high resolution detector required ($\delta x \sim 0.2\text{mm}$)*
- *Results to appear in EuroPhysicsLetters*

Increase the deflection angles using a multiple prisms set-up (HZB, J. Schultz, T. Krist)



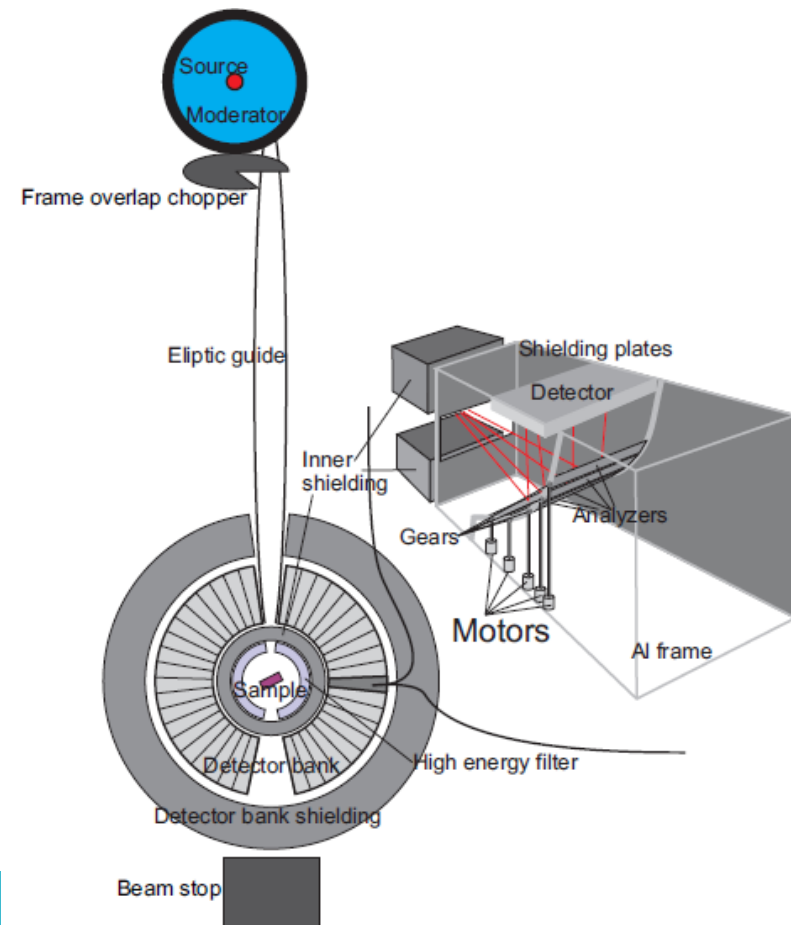


Energy analysis using crystal optics

CAMEA Project

(Univ. Copenhagen - EPFL, Jonas Birk, K. Lefman, H. Ronnow)

- Initial task aim switched from TAS to TOF
- NO is supporting MC simulations / Feasibility study for implementation on cold TOF at ESS





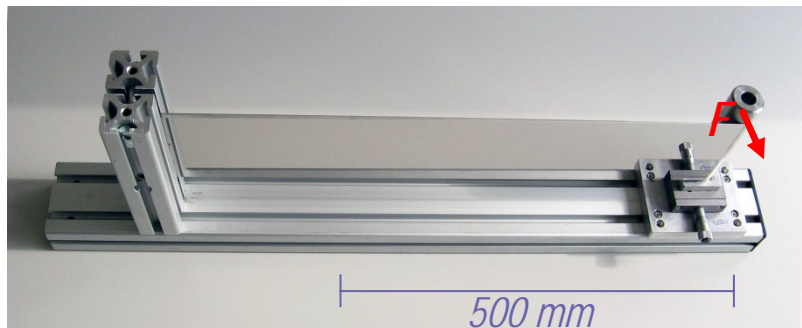
Task 3:
Advanced Focusing Techniques



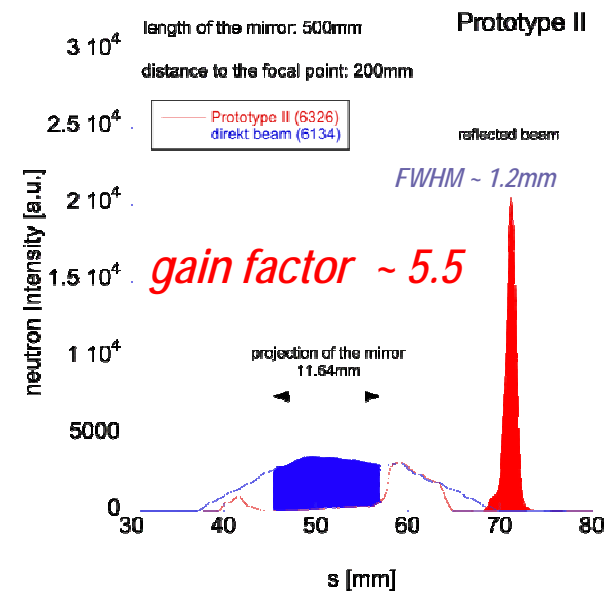
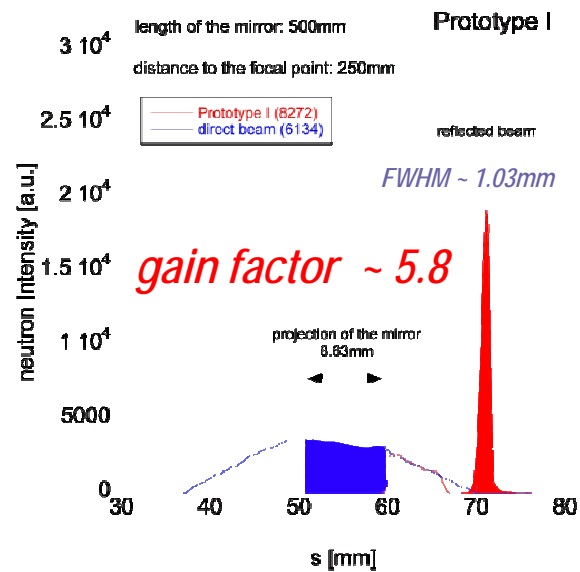
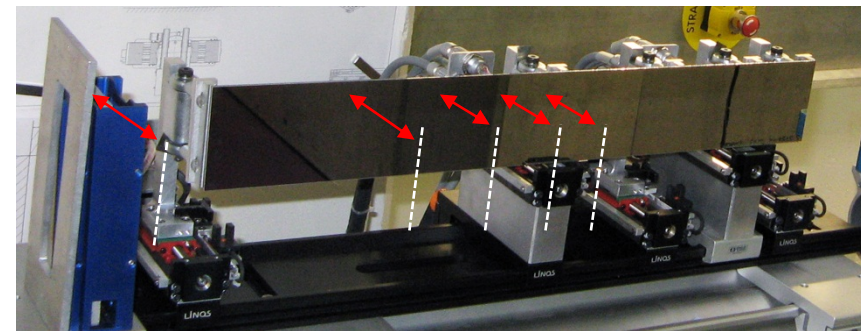
Adaptive optic (parabolic shape)

experiments performed by M. Schneider, U. Filges, T. Panzner

Prototype I



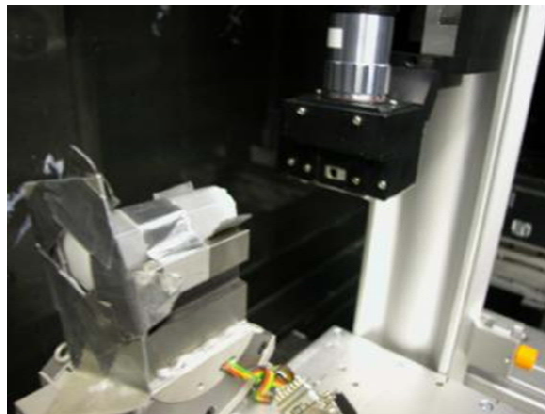
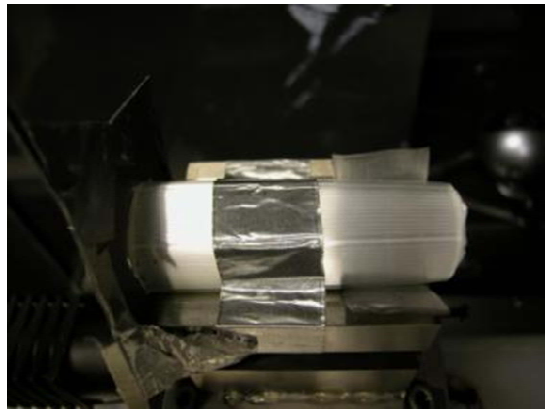
Prototype II





nmi3

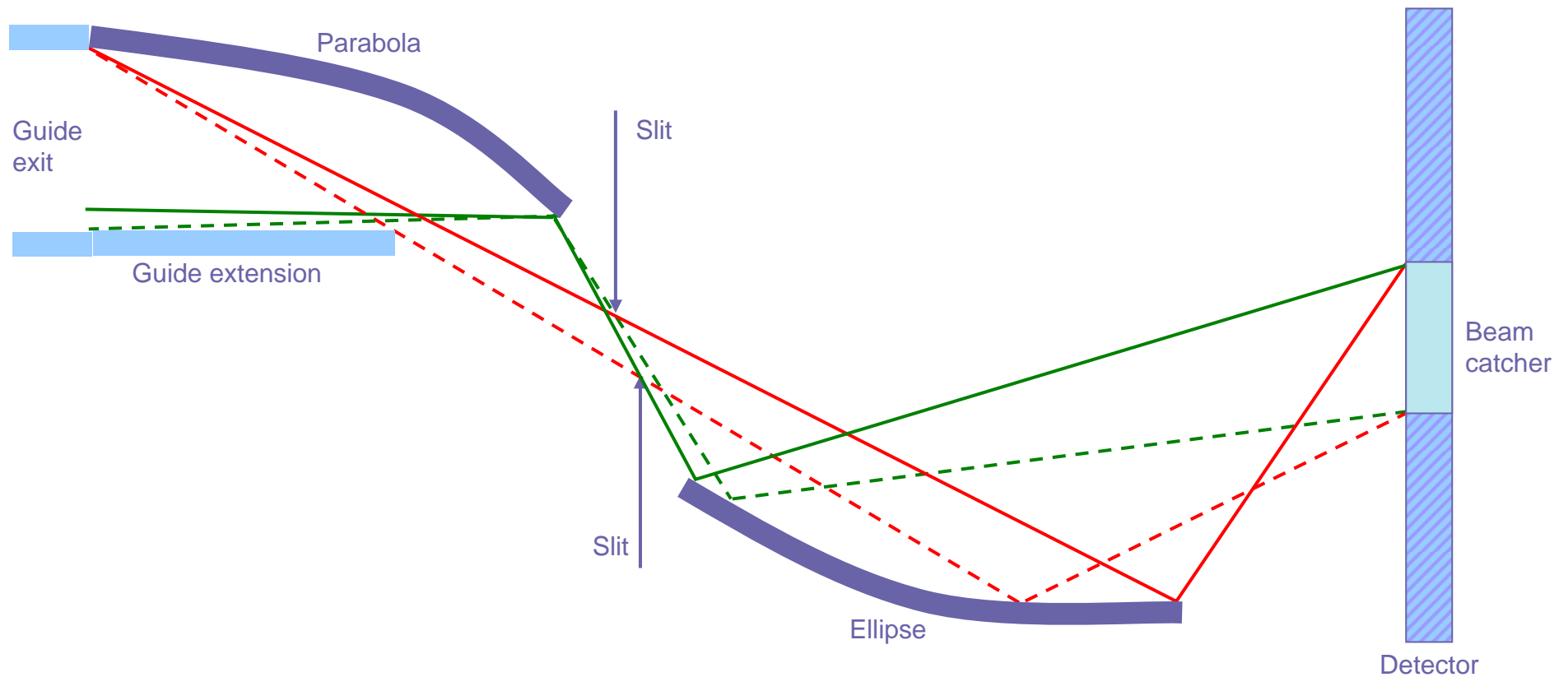
High resolution imaging using focussing optics (HZB, N. Kardjilov, T. Krist)



- *Focussing over an area of $2 \times 2 \text{ mm}^2$ using a Kumakhov lens*
- *CCD associated with scintillator with a $1 \mu\text{m}^2$ effective resolution*

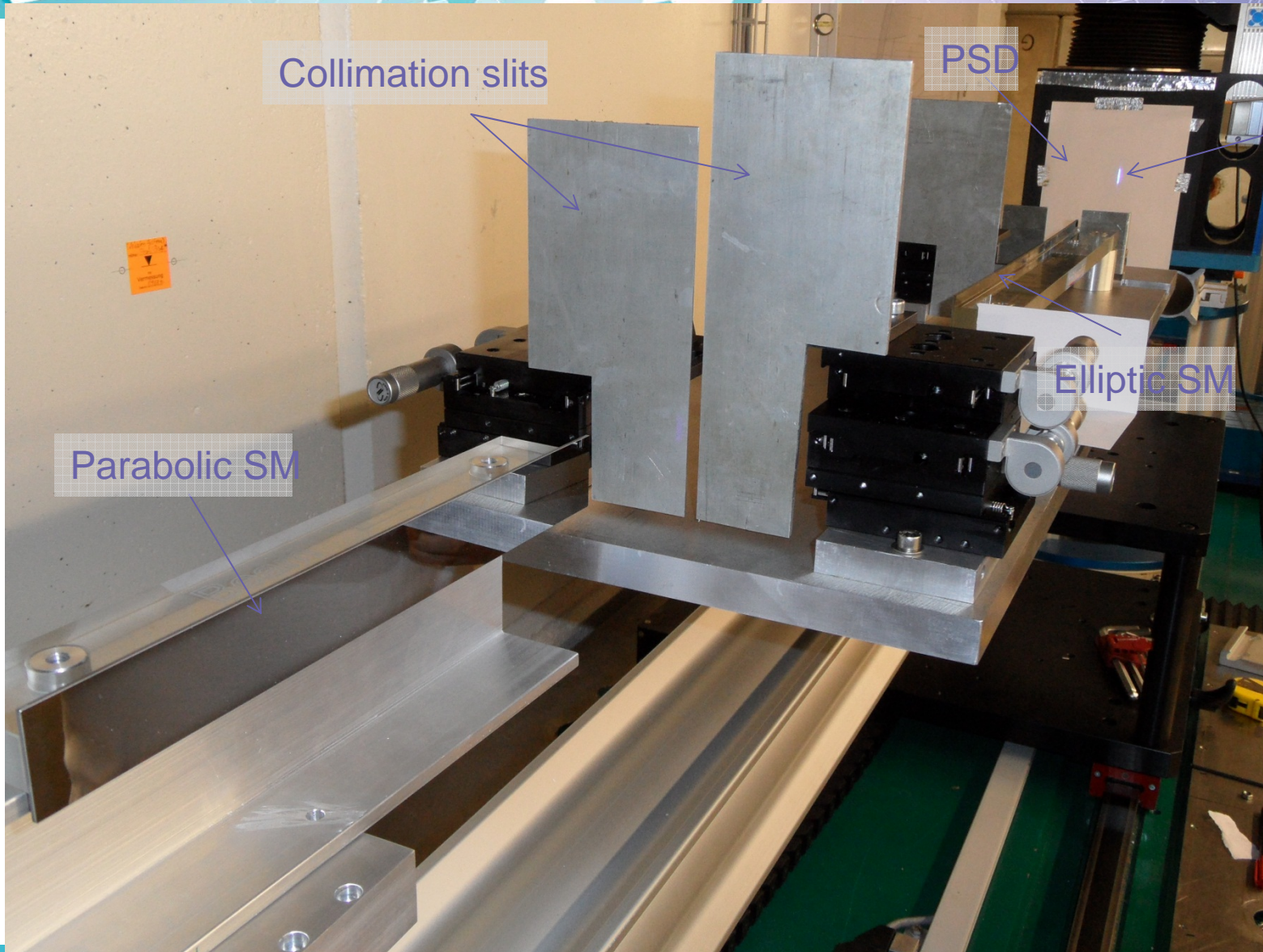


Focussing SANS using reflective optics (LLB, S. Désert et al)





Test of prototype on BOA (T. Panzner) @ PSI, 03-06 Oct. 2011



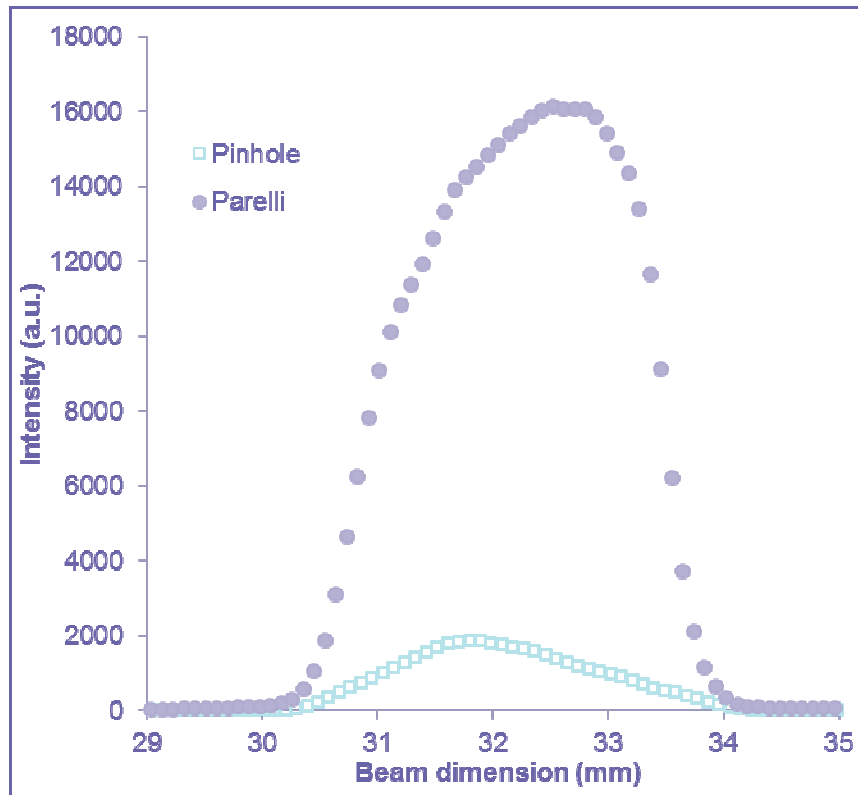
Collimation slits

PSD

Laser spot after reflexion on both SM (for alignment purpose)

Elliptic SM

Parabolic SM



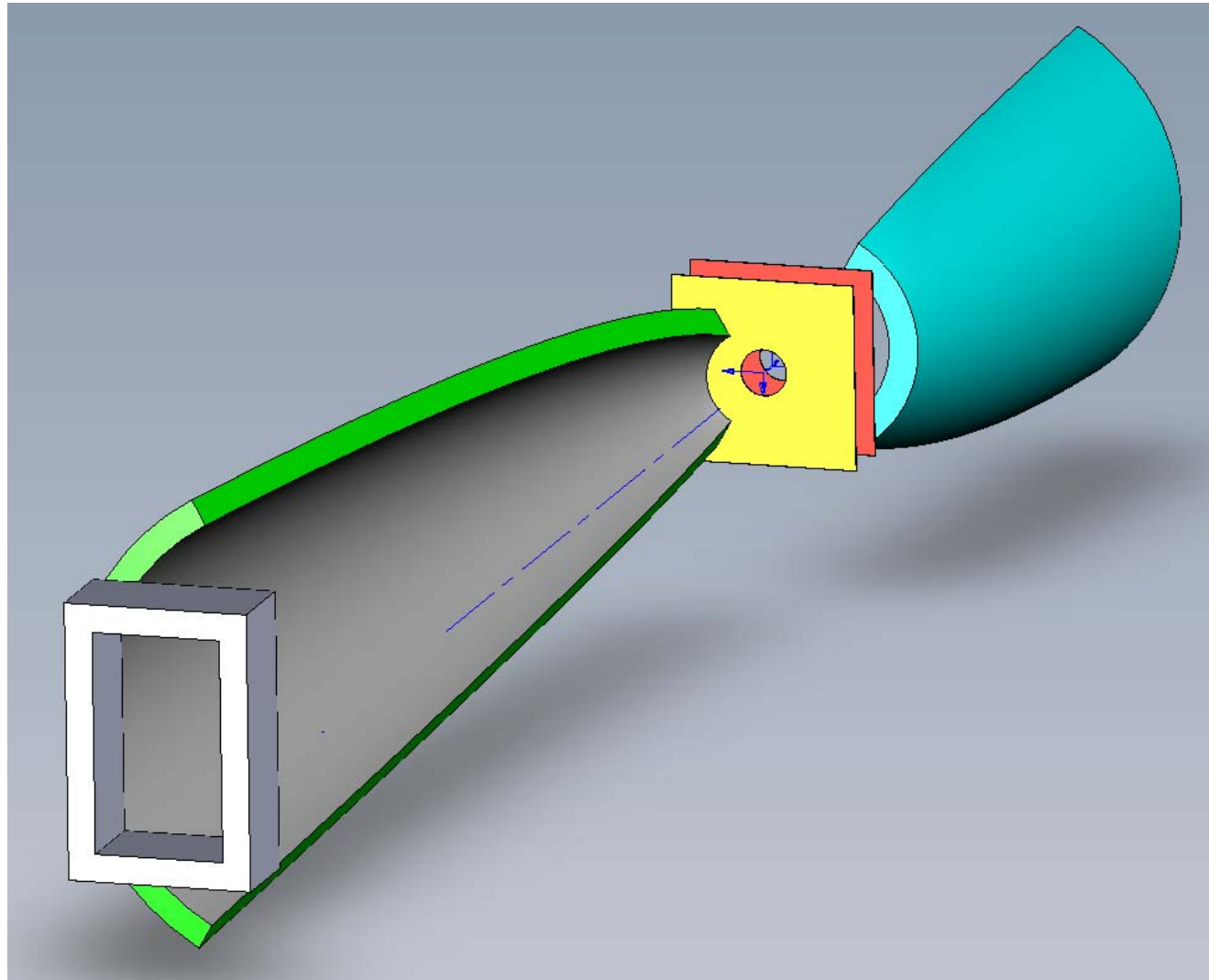
Gain 10 along one axis
→ 100 with a 3D setup.

- Interests of the setup:
 - Beam focusing without aberration
 - Gain approx. 3 compared to pinhole with same sample size
- The beam size on the detector is independent of the sample size
- Large samples can be used for large intensity gains



nmi3

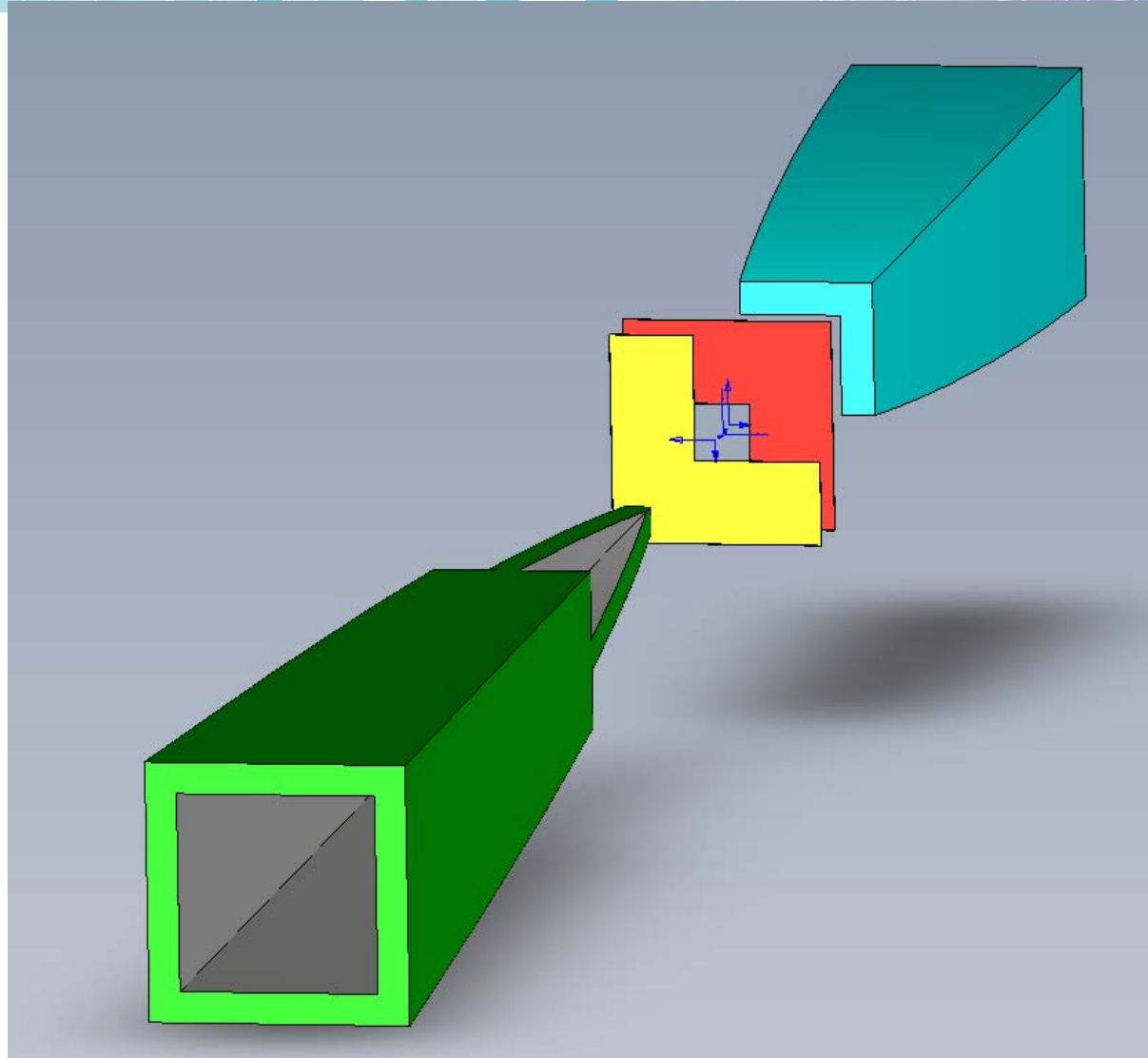
3D View (2 reflections)





nmi3

3D View (4 reflections)





Focusing SANS with Nested Elliptical Mirrors (J. Fuzi et al, BNC) KB set-up

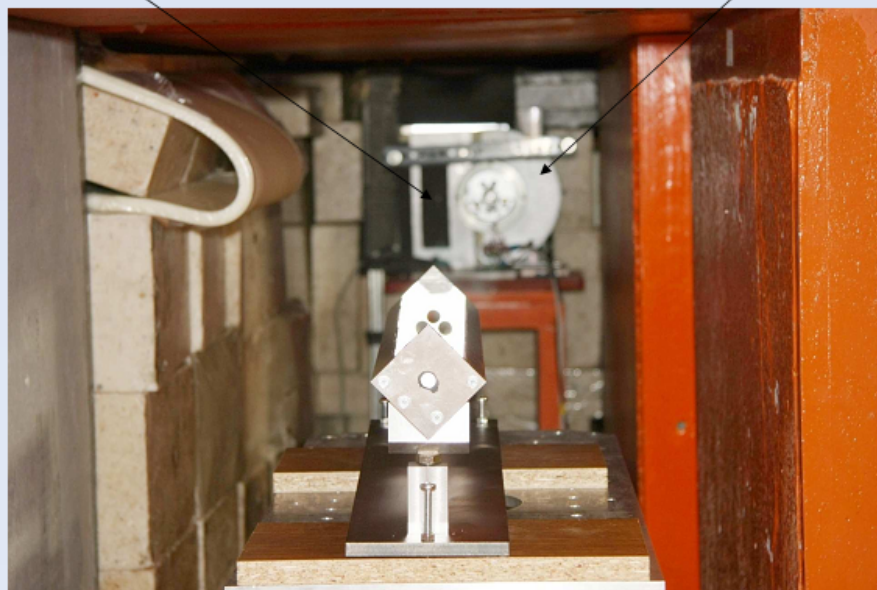




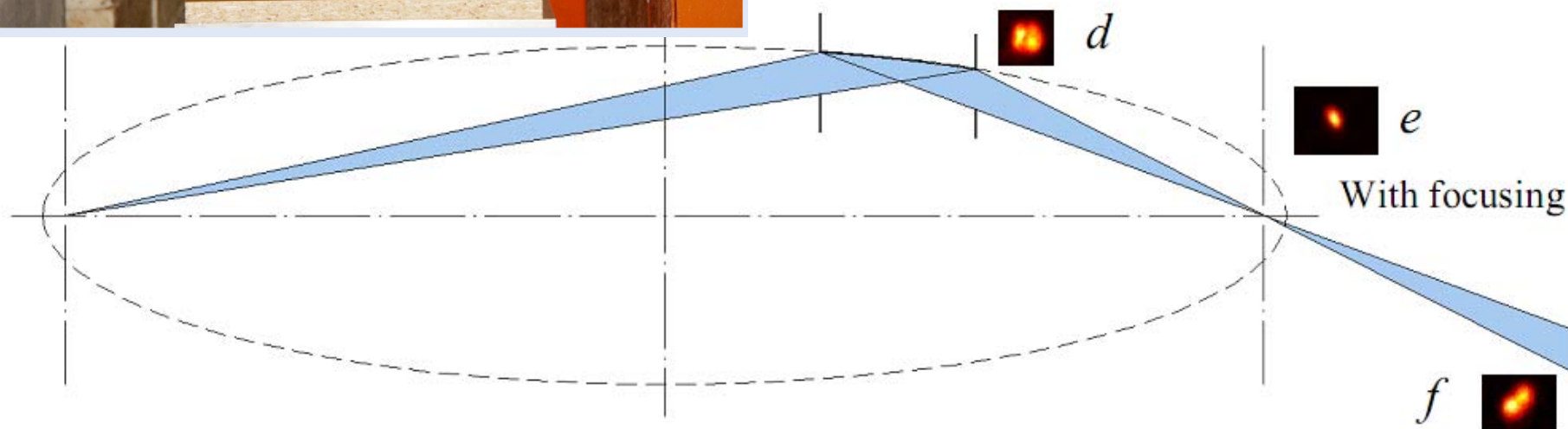
nmi3

Pinhole

Chopper



Proceedings of ECNS Prague





Collaborations - Common experiments

- LLB (S. Desert et al) performed experiments at PSI on BOA with T. Panzner on Focussing SANS with reflective optics
- ILL (R. Cubitt) performed experiments at PSI on AMOR with J. Stahn on Energy Encoding using prisms
- HZB (J. Schultz et al) performed experiments on EROS at LLB with F. Ott on Energy Encoding and focussing using prisms
- INFN (F. Sacchetti et al) performed experiments at PSI



DELIVERABLES

- No major deviations
- No major hurdles

- Some deliverables somewhat delayed
- But all Tasks should be fulfilled by the end of the project

- A number of proofs of concepts have already been done
- Need to be used/evaluated in « real life »